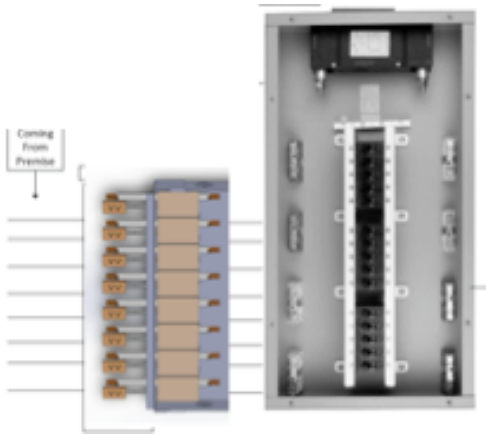




MODEL: AllSafe™ Breaker Panel Companion
All-In-One Multiple Circuit Protection
with Optional Power Monitoring & Control
SPECIFICATION SHEET

Intelligent Electronic Power Safety Companion Panel for Breaker Panels.
Unparalleled All-In-One GFCI, AFCI, Overcurrent & Surge Protection.
Optional Monitoring & Data Acquisition of Voltage and Current.

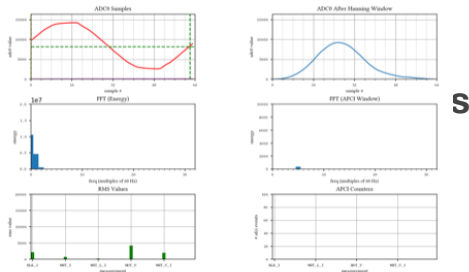


Unparalleled All-In-One, GFCI, AFCI, Overcurrent and Surge Protection

Self Test & Reset Buttons

Unparalleled Real Time Power Monitoring, Remote Control & Reporting

Communication Port Access to API-generated monitoring, reporting & control



Multiple Reporting Modes

AMPS	15 Amp/20 Amp, 125-Volt (Rated at 20 Amps, configurable at assembly to 15A or 20A) 240V Single Phase
WIRING TYPE	3 wire
WIRING	AllSafe™ Safety Panel connects inside appliance with line voltage wiring. Optional: communications port and cable (future wireless option) for connection to user's computer for API controlled real time monitor display, and for data storage
CONFIGURATION	8, 10, 20, 40 Module Configurations
FUNCTION TYPE	
GRADE	Residential, Commercial, Industrial, Military, Hospital
GROUNDING TYPE	Grounded
INDOOR/OUTDOOR	Indoor
STATUS LIGHTS	Bi-colour LEDs indicate fault conditions
MISWIRING	If black not connected power is not supplied. Optional LED is off when power not provided
MOUNT LOCATION	Beside Breaker Panel
NUMBER OF PRONGS	
RECEPTACLE VOLTAGE	125V code; 240V single phase



151 Aviva Park Drive, Woodbridge ON L4L 9C1
 +1 (416) 743 0075

rpardo@brainwavecorporation.com
www.brainwavecorporation.com

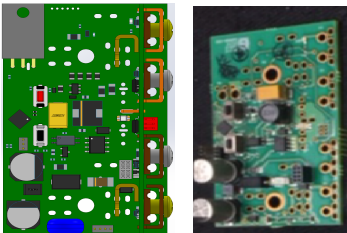
OPTIONAL: PLC Compatible; Single Outlet, Direct Wire (supporting use of conduits), customization (Up to 250 different command lines), Communications, Dry Contacts for turning on/off or emergency stop. **(verify)**



MODEL: AllSafe™ Breaker Panel Companion
All-In-One Multiple Circuit Protection
with Optional Power Monitoring & Control
PRODUCT SHEET

ALL-IN-ONE ELECTRICAL SAFETY COMPANION PANEL FOR BREAKER PANELS – An Alternative To GFCI/AFCI Breakers

Unparalleled GFCI, AFCI, Over-current & Surge Multi-Circuit Protection for Traditional Breaker Panels



The AllSafe™ Power Control and Monitoring Panel monitors and controls the power electronically as a companion product “in front” of the Breaker Panel. Each module in the AllSafe™ Panel has the characteristics of a digital breaker with optional remote power control and monitoring and all the AllSafe™ functionality.

Ideal as a more comprehensive electrical safety solution, including reducing the need to upgrade existing breakers and breaker panels.

Ground Fault Circuit Interrupters (GFCI) protect against electrical shock (North American Electrical Code requires GFCI protection within a certain distance from water; e.g. bathrooms, kitchens). Arc Fault Protection Interrupters (AFCI) protect against electrical fires (protection is usually required for each circuit. These can be installed as receptacles or as circuit breakers in the Breaker Panel.

Not only is Brainwave’s GFCI, AFCI, Over-current and Surge Protection electronic - rather than electromechanical - resulting in faster response to power faults, but its patent pending technology maintains power in an off state, turning the power on continually during each cycle (milliseconds), if and only if no fault is detected, resulting in increased unparalleled safety.

AllSafe™ will only activate and provide power if no electrical fault is detected. The decision to supply power to the appliance, equipment or device is made for every AC cycle, making it extremely fast & sensitive to external power conditions.

AllSafe™ also features a number of patent pending technologies to help safeguard against short circuits and to eliminate certain kinds of electrical arcs, safeguarding against potential to harm through shock or fire as well as damage to the electrical equipment plugged in.



Note: for GFCI and AFCI (overcurrent & surge?) in-wall and downstream protection, User can install AllSafe™ in-wall electrical receptacles.

151 Aviva Park Drive, Woodbridge ON L4L 9C1
+1 (416) 743 0075

rpardo@brainwavecorporation.com
www.brainwavecorporation.com



MODEL: AllSafe™ Breaker Panel Companion
All-In-One Multiple Circuit Protection
with Optional Power Monitoring & Control
PRODUCT SHEET

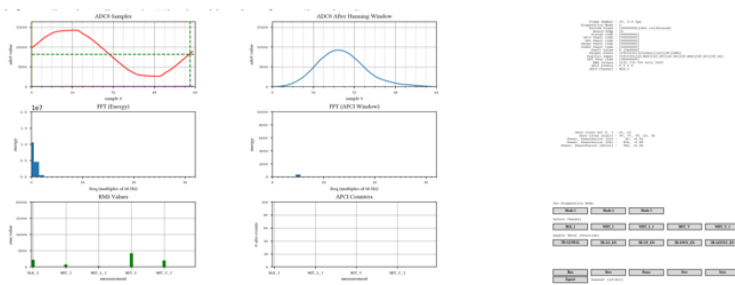
ADVANCED REAL TIME POWER MONITORING & CONTROL
Intelligent Power Data Acquisition of Voltage and Current

APPLICATIONS: The AllSafe™ Power Control and Monitoring Panel monitors and controls the power electronically as a companion product “in front” of the Breaker Panel.

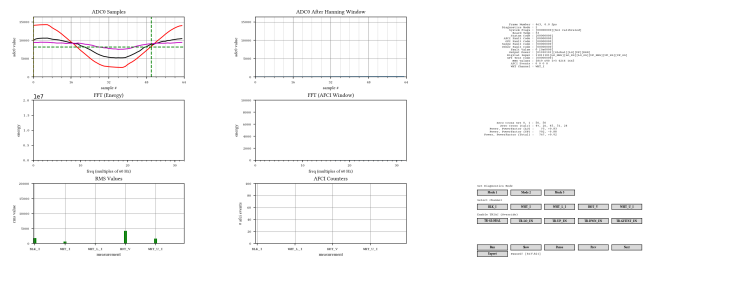
The system module API monitors signals in real time: including but not limited to frequency analysis and phase relationships. actual power consumed, reactive power, power factor (useful for early end-of-life detection), and fault reporting. **Information is collected for entire circuits.**

API Software collects and reports true energy use and equipment power use profiles, in real time or for subsequent analysis. All the data can be recorded & replayed back. API provides turn on or off, and power delivery of voltage and/or current for operation and optimisation.

Examples: The hot volts is being monitored. (e.g. can see FFT; arc related info is displayed.



Multiple Signals – Hot Volts & Currents including Power Factor Reporting



151 Aviva Park Drive, Woodbridge ON L4L 9C1
 +1 (416) 743 0075

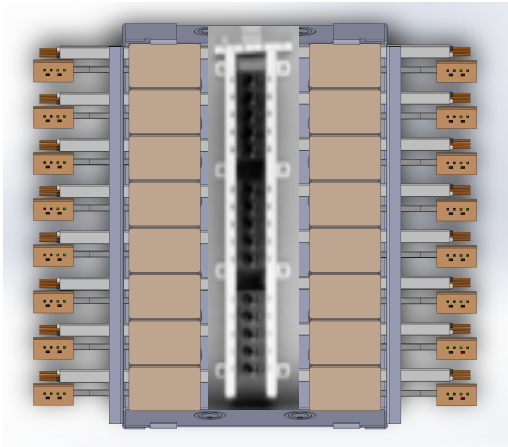
rpardo@brainwavecorporation.com
www.brainwavecorporation.com



MODEL: OEM AllSafe™ Breaker Panel
All-In-One Multiple Circuit Protection
with Optional Power Monitoring & Control
PRODUCT SHEET

ALL-IN-ONE ELECTRONIC BREAKER PANEL PROTECTION FOR OEMS

Unparalleled GFCI, AFCI, Over-current & Surge Multi-Circuit Protection



The AllSafe™ Power Control and Monitoring Panel monitors and controls the power electronically as a companion product **INSIDE** the Breaker Panel. Each module in the AllSafe™ circuit breakers have the characteristics of a digital breakers with optional remote power control and monitoring and all the AllSafe™ functionality.

Ideal as a more comprehensive electrical safety solution not only is Brainwave's GFCI, AFCI, Over-current and Surge Protection electronic, resulting in faster response to power faults, but its patent pending technology maintains power in an off state, turning the power on continually during each cycle (milliseconds), if and only if no fault is detected, resulting in increased unparalleled safety.

AllSafe™ will only activate and provide power if no electrical fault is detected.

The decision to supply power to the appliance, equipment or device is made for every AC cycle, making it extremely fast & sensitive to external power conditions.



151 Aviva Park Drive, Woodbridge ON L4L 9C1

+1 (416) 743 0075

rpardo@brainwavecorporation.com

www.brainwavecorporation.com