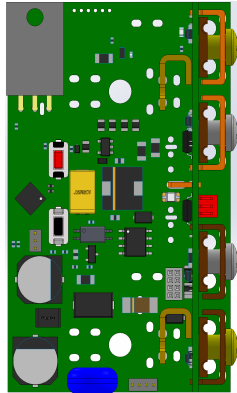


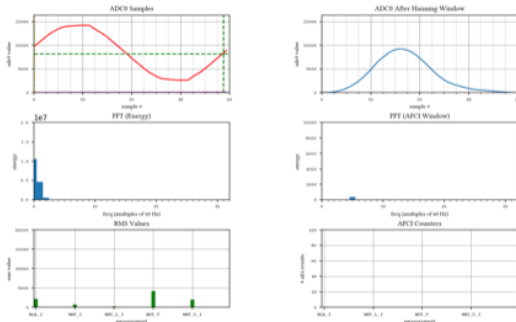


MODEL: AllSafe™ OEM Appliance Internal All-In-One Protection with Optional Power Monitoring & Control SPECIFICATION SHEET

Intelligent Power module for OEM EQUIPMENT & APPLIANCES
Unparalleled All-In-One GFCI, AFCI, Overcurrent & Surge Protection.
Optional Monitoring & Data Acquisition of Voltage and Current.



Multiple Display Modes



Unparalleled All-In-One, GFCI, AFCI, Overcurrent and Surge Protection

Self Test & Reset Buttons

Unparalleled Real Time Power Monitoring, Remote Control & Reporting

Communication Port Access to API-generated monitoring, reporting & control

OPTIONAL: PLC Compatibility. Single or Dual Outlet or Direct Wire (supporting use of conduits), customization (Up to 250 different command lines), Communications, Dry Contacts for turning on/off or emergency stop. **(verify)**

AMPS

15 Amp/20 Amp, 125-Volt (Rated at 20 Amps, configurable at assembly to 15A or 20A). 240V Single Phase.

WIRING TYPE

3 wire

WIRING

Sensor Protection Module connects inside appliance with line voltage wiring. Optional: communications port and cable (future wireless option) for connection to user's computer for API controlled real time monitor display, and for data storage

CONFIGURATION

Customization for internal appliance/machine/device integration

FUNCTION TYPE

Hardwired, 1 channel

GRADE

Consumer, Residential, Commercial, Industrial, Military, Hospital

GROUNDING TYPE

Grounded – Customize for OEM

INDOOR/OUTDOOR

Depends on appliance

STATUS LIGHTS

Optional: Bi-colour LED to indicate fault condition(s)

MISWIRING

If black not connected power is not supplied. Optional LED is off when power not provided.

MOUNT LOCATION

Inside appliance, equipment, device

NUMBER OF PRONGS

VOLTAGE

125V code; 240 V single phase



151 Aviva Park Drive, Woodbridge ON L4L 9C1

+1 (416) 743 0075

rpardo@brainwavecorporationc.om

www.brainwavecorporation.com



**MODEL: AllSafe™ OEM Appliance
Internal All-In-One Protection
with Optional Power Monitoring & Control
PRODUCT SHEET**

**ALL-IN-ONE SAFETY FOR APPLIANCES, DEVICES, AND
EQUIPMENT !**

**Unparalleled GFCI, AFCI, Over-current & Surge Protection for
OEM customization for integration in specific devices and
equipment**



Ground Fault Circuit Interrupters (GFCI) protect against electrical shock (North American Electrical Code requires GFCI protection within a certain distance from water; e.g. bathrooms, kitchens).

Arc Fault Protection Interrupters (AFCI) protect against electrical fires (protection is usually required For each circuit).

The AllSafe™ also features a number of patent pending technologies to help safeguard against short circuits and to eliminate certain kinds of electrical arcs, safeguarding against potential to harm through shock or fire as well as damage to the electrical equipment plugged in.

Not only is Brainwave's GFCI, AFCI, Over-current and Surge Protection electronic - rather than electromechanical - resulting in faster response to power faults, but its patent pending technology maintains power in an off state, turning the power on continually during each cycle (milliseconds), if and only if no fault is detected, resulting in increased unparalleled safety.

The AllSafe™ will only activate and provide power if no electrical fault is detected.

The decision to supply power to the appliance, equipment or device is made for every AC cycle, making it extremely fast & sensitive to external power conditions.

Note: for GFCI and AFCI (*overcurrent & surge?*) in-wall and downstream protection, User can install AllSafe™ in-wall electrical receptacles.



151 Aviva Park Drive, Woodbridge ON L4L 9C1

+1 (416) 743 0075

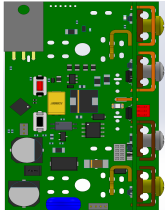
rpardo@brainwavecorporation.com

www.brainwavecorporation.com



MODEL: AllSafe™ OEM Appliance
Internal All-In-One Protection
with Optional Power Monitoring & Control
PRODUCT SHEET

ADVANCED REAL TIME POWER MONITORING & CONTROL
Intelligent Power Sensor Module for Data Acquisition of
Voltage and Current



This module has the characteristics of a digital breaker with remote power control and monitoring and all the AllSafe™ functionality. Ideal for any equipment that can benefit from line power control and monitoring (including IoT applications) while being protected by the latest state of the art AllSafe™ electrical safety.

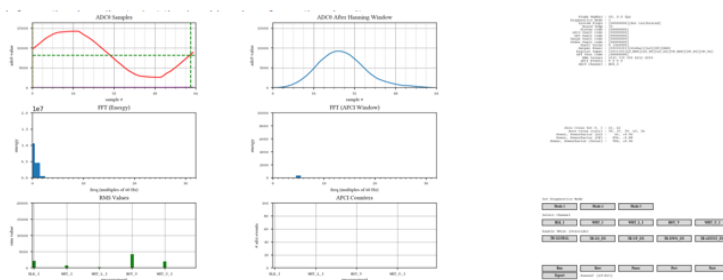
APPLICATIONS: From Appliances to Industrial Equipment.

Examples: Hair dryers, toasters, blenders, motors, laser cutters, certain CNC equipment, vacuum cleaners, air conditioners, dishwashers, clothes dryers, drying cabinets, freezers, refrigerators, kitchen stoves, water heaters, washing machines, microwave ovens, induction cookers and any appliance that can benefit from enhanced safety and power control.

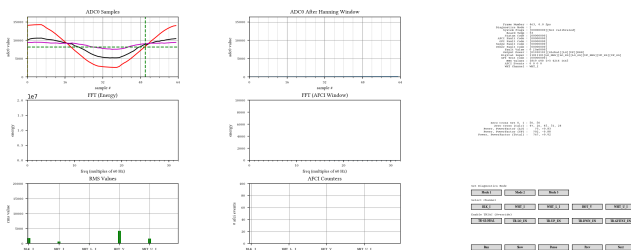
The system module API monitors signals in real time: including but not limited to frequency analysis and phase relationships. actual power consumed, reactive power, power factor (useful for early end-of-life detection), and fault reporting. Information is collected at the load level, or for entire circuits.

API Software collects and reports true energy use and equipment power use profiles, in real time or for subsequent analysis. All the data can be recorded & replayed back. API provides turn on or off, and power delivery of voltage and/or current for operation and optimisation.

Examples: The hot volts is being monitored. (e.g. can see FFT; arc related info is displayed).



Multiple Signals – Hot Volts & Currents including Power Factor Reporting



151 Aviva Park Drive, Woodbridge ON L4L 9C1

+1 (416) 743 0075

rpardo@brainwavecorporationc.om

www.brainwavecorporation.com