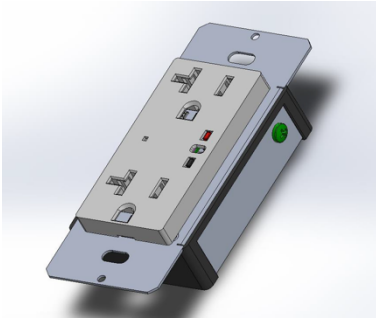


## Unparalleled All-In-One Tamper Resistance, GFCI, AFCI, Overcurrent & Surge Protection



### Unparalleled All-In-One Tamper Resistance, GFCI, AFCI, Overcurrent and Surge Protection

#### Standard Features:

- White indoor Duplex Wall Outlet
- Decora style outlet
- High-impact resistant thermoplastic construction
- Low profile face
- Back body to face attached by tamper resistant screws
- Package contains outlet with mounting screws attached
- Test/Reset & LED indicators

**Optional:** PLC compatible power monitoring, reporting & control

<b>AMPS</b>	15 Amp/20 Amp, 125-Volt (Rated at 20 Amps, configurable at assembly to 15A or 20A). 240v Single Phase
<b>WIRING TYPE</b>	3 wire. Accepts #12 and #14 wires (Back installation preferred for safety)
<b>WIRING</b>	Screw pressure activated via back (preferred for reliability and robust termination) connectors. Two back wire holes for additional wiring flexibility per channel.
<b>CONFIGURATION</b>	Straight blade for 15A and rotated for 20A
<b>FUNCTION TYPE</b>	Duplex with supervised downstream
<b>GRADE</b>	Residential, Commercial, Industrial, Military, Hospital
<b>GROUNDING TYPE</b>	Grounded
<b>INDOOR/OUTDOOR</b>	Indoor
<b>STATUS LIGHTS</b>	Bi-colour LED to indicate fault condition(s)
<b>MISWIRING</b>	If black not connected power is not supplied. LED is off when power not provided.
<b>MOUNT LOCATION</b>	Wall
<b>NUMBER OF PRONGS</b>	accepts both 2 or 3 prongs
<b>RECEPTACLE VOLTAGE</b>	125V code



151 Aviva Park Drive, Woodbridge ON L4L 9C1  
+1 (416) 743 0075

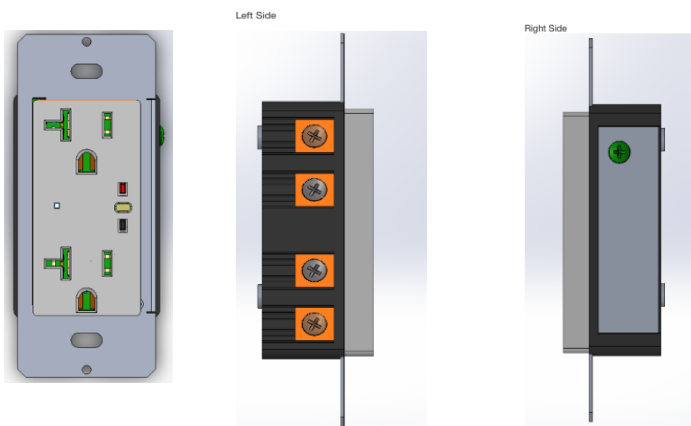
[rpardo@brainwavecorporation.com](mailto:rpardo@brainwavecorporation.com)  
[www.brainwavecorporation.com](http://www.brainwavecorporation.com)

## Unparalleled Tamper Resistance, GFCI, AFCI, Over-current & Surge Protection.

Brainwave's AllSafe™ Tamper Resistant (TR) Receptacle allows unparalleled tamper resistance safety in an electrical receptacle, providing a safer, superior electronic approach to help prevent users from electrical shock from unintentional activation of live 125v/240v power when conductive foreign objects are inserted or live electrically powered plug blades/prongs unintentionally come in contact with metal (ground).

Tamper Resistant (TR) electrical receptacles serve to reduce the likelihood of shock, burn or electrocution due to insertion of conductive foreign objects into outlet openings and contact with energized parts. An industry first, Brainwave's new AllSafe™ TR receptacle provides an electronic sensing system to detect the presence of electrical prongs/blades rather than the traditional spring loaded gates, shutters or sliders.

**Not only is Brainwave's GFCI, AFCI, Over-current and Surge Protection electronic - rather than electromechanical - resulting in faster response to power faults, but its patent pending technology maintains power in an off state, turning the power on continually during each cycle (milliseconds), if and only if no fault is detected resulting in increased unparalled safety.**



Ultra Thin 5/8" versus 1.5" for traditional AFCI or GFCI receptacles



151 Aviva Park Drive, Woodbridge ON L4L 9C1  
+1 (416) 743 0075

[rpardo@brainwavecorporation.com](mailto:rpardo@brainwavecorporation.com)  
[www.brainwavecorporation.com](http://www.brainwavecorporation.com)

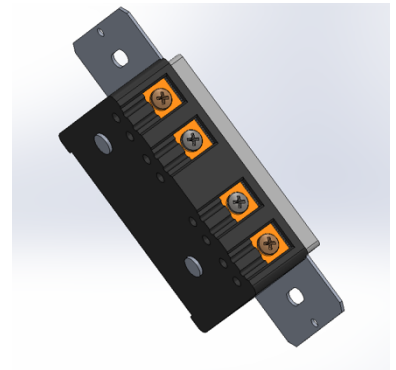
## Introducing New Levels of Safety: Easy, Safer Wiring Method

The AllSafe™ TR™ will only activate and provide power safely until simultaneous contact is made by both hot and neutral plug blades. The decision to supply power is made for every AC cycle, making it extremely fast & sensitive to external power conditions. The receptacle does not have spring loaded shutters and accordingly does not restrict insertion of the plug prongs into the outlet. Tamper resistance is achieved when the prongs are inserted at the same time (within 350 milliseconds) in order for contacts to be energized.

If both prongs are not inserted within this time frame, the outlet will be held in a disabled mode, until the prong(s) has/have been removed.

The AllSafe™ TR™ also features a number of patent pending technologies to help safeguard:

**WireSafe™** patent pending mechanical design which provides additional electrical safety. Power terminals and the safety ground is on opposite sides. The plastic design allows screws to be recessed providing additional mechanical and electrical safety against shorting.



**PowerNow™** patent pending feature which prevents powering on if a blade (hot or neutral) is no longer in contact or if conductors have been incorrectly wired to protect short circuits, eliminate electrical arcs, safeguard against potential to harm through shock or fire, or damage to electrical equipment plugged in.

**Brainwave**

151 Aviva Park Drive, Woodbridge ON L4L 9C1  
+1 (416) 743 0075

[rpardo@brainwavecorporation.com](mailto:rpardo@brainwavecorporation.com)  
[www.brainwavecorporation.com](http://www.brainwavecorporation.com)